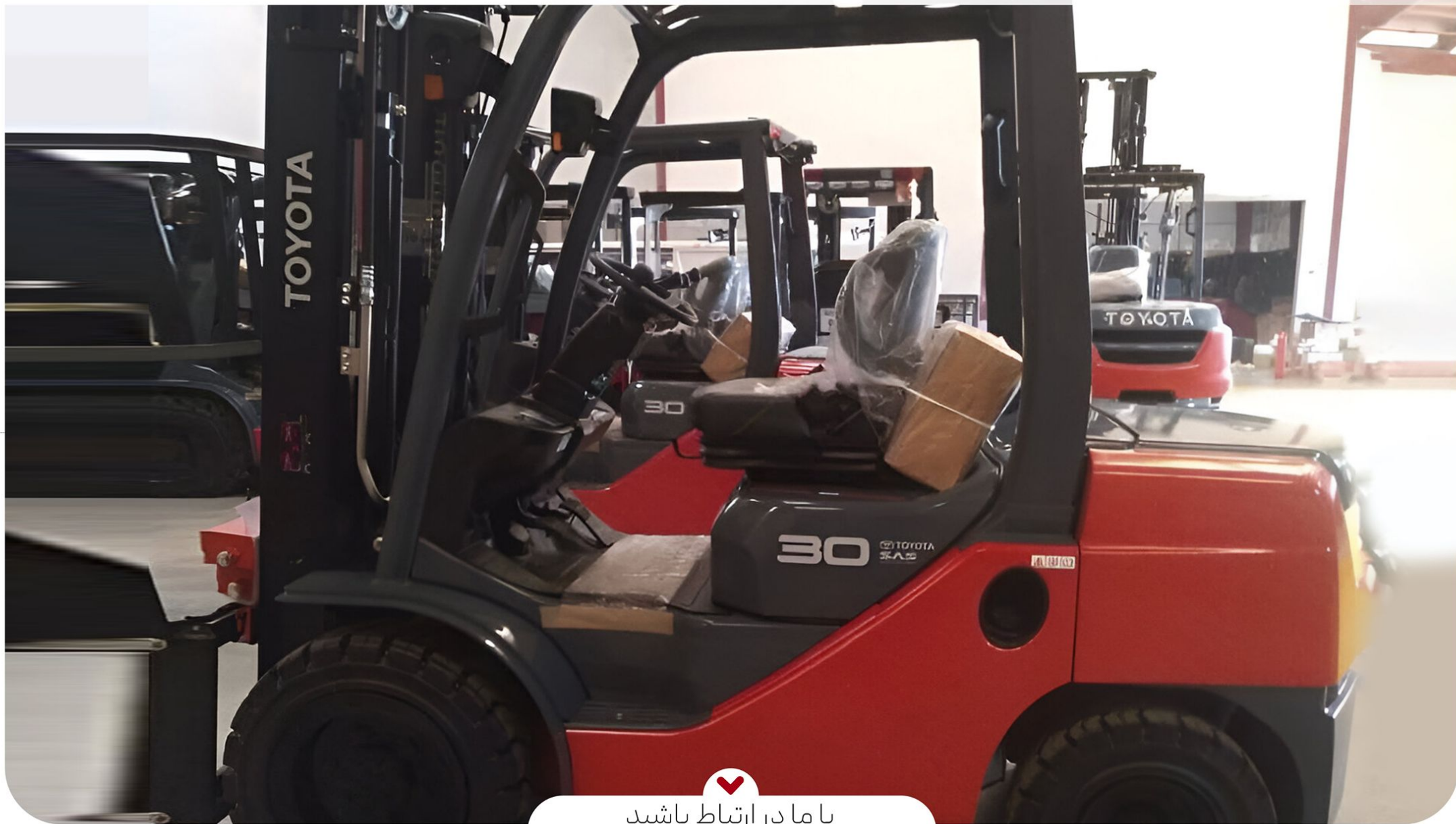


# TOYOTA 8FD30 3TON DIESEL FORKLIFT 2024 Model



با ما در ارتباط باشید



09167335900

02171057404

+971502552958



pishrah.com

## TOYOTA 8FD30 3TON DIESEL FORKLIFT 2024 Model

- **Origin: Japan**
- **3 TON CAPACITY**
- **4.5 mtr LIFT HEIGHT**
- **FSV 3 Stage Mast for container operation**
- **SIDE SHIFT**
- **SOLID TYRES**
- **SAS- System of Active Stability.**
- **Fork Length 1070mm**





# TOYOTA

## MATERIAL HANDLING

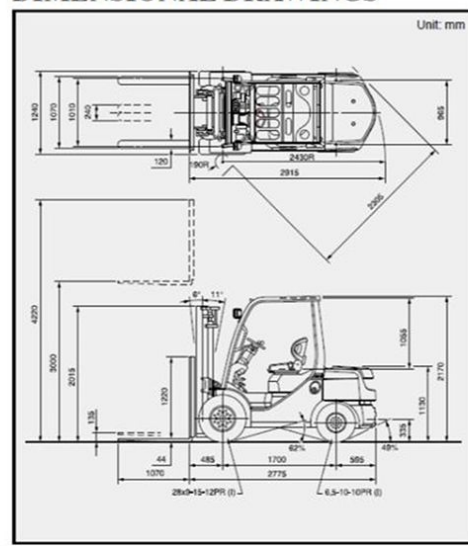


### MAST SPECIFICATIONS & RATED CAPACITIES

Mast Type	Maximum Fork Height	Overall Height				Free Lift		Single Tire				Dual Tire			
		Lowered	Extended		Without Load Backrest	With Standard Load Backrest	Tilt Range	Load Capacity at 500 mm LC		Tilt Range	Load Capacity at 500 mm LC				
			Without Load Backrest	With Standard Load Backrest				Pneumatic Tire	Pneumatic-Shaped Cushion Tire		Pneumatic Tire/ Pneumatic-Shaped Cushion Tire				
mm	mm	mm	mm	mm	mm	deg	deg	kg	kg	deg	deg	kg			
Wide Visible Full-Free Lift Three-Stage Mast (FSV)	3700	1915	4315	4920	1300	895	6	6	3000	3000	6	6	3000		
	4000	2015	4615	5220	1400	795	6	6	3000	3000	6	6	3000		
	4300	2165	4915	5520	1550	945	6	6	3000	3000	6	6	3000		
	4500	2215	5115	5720	1600	995	6	6	3000	3000	6	6	3000		
	4700	2265	5315	5920	1650	1045	6	6	3000	3000	6	6	3000		
	5000	2425	5615	6220	1810	1205	6	6	2600	2750	6	6	2950		
	5500	2615	6115	6720	2000	1395	6	6	1900	2050	6	6	2650		
	6000	2865	6615	7220	2250	1645	6	6	1500	1650	6	6	2050		
	6500	3115	7115	7720	2500	1895	—	—	—	—	6	6	1600		
	7000	3365	7615	8220	2750	2145	—	—	—	—	6	6	1200		

NOTE: Height of standard load backrest is 1220 mm.  
\* with A4 piping, minus 20 mm.

### DIMENSIONAL DRAWINGS



# TOYOTA

## MATERIAL HANDLING



### TECHNICAL SPECIFICATION OF "TOYOTA" 3 TON 3 STAGE DIESEL FORKTRUCK MODEL 62-8FD30.

Origin & Manufactured in	: Japan
Rated Capacity	: 3,000 kg
Load Centre	: 500 mm
Fuel Type	: Diesel
Transmission	: Power Shift
Steering	: Power Steering
Engine	: TOYOTA / 1DZ-II
Cylinder	: 4
Displacement	: 2486 cc
Fuel Tank Capacity	: 60 litres
Maximum Lift Height	: 4500mm
Residual Capacity at Height of 4500 mm is 3000 kg @ 500 mm LC	
Mast Type	: 3 Stage Full Free Lift (FSV Mast – Container Application).
Free Lift	: 1600 mm/ 995 mm (Without / With Load Backrest)
Mast Lowered Height	: 2215 mm
Mast Extended Height	: 5115 / 5720 mm (Without / With Load Backrest)
Load Backrest Height (LBR)	: 1220 mm
Height of Overhead Guard	: 2170 mm
Carriage Type	: Side Shift Carriage
Fork Length	: 1070mm
Tyres	: Solid.



### EQUIPPED WITH: SAS- System of Active Stability

1. Full Traffic Lights, Rear Pillar Assist Grip.
2. Rear View Mirrors, Back Up Buzzer & Yellow Strobe Light.
3. Tool Set, Operators Manual.

### MAIN FEATURES AND BENEFITS OF 8-SERIES

- ❖ Manufactured according to Toyota Production Systems (TPS). This ensures the highest quality in production and therefore excellent reliability.
- ❖ Outstanding comfort and visibility- The 8-Series provides the comfort and visibility for long hours of efficient operation.
- ❖ **Toyota 1 DZ 11 engine** – More power with low noise and exhaust emissions make the 8-Series environmentally friendly.
- ❖ Build in Reliability & Serviceability- 8-Series is design to be tough and easy to maintain.

